

PPM Technology Ltd is committed to advancing existing technologies within gas detection. Using our vast experience and knowledge we are proud to make the Formaldemeter *hTV-m* available.

The Formaldemeter *hTV-m* offers the same precise 3 parameter monitoring for low levels of hazardous formaldehyde vapours under extremes of temperature and humidity as seen in the world-wide success of the Formaldemeter *hTV* but with the addition of these impressive extra features:

- A built in non-volatile memory
- Capable of up to 1 month of continuous monitoring
- A real time clock
- Mains or battery powered
- Can be used as a manual hand held and a continuous monitoring data logger
- An RS232 interface allowing direct connection to PC
  - for data download and instrument settings.
  - for control by the SPC-2 programme without the need for additional hardware (Optional Extra)
- Internal Audible Alarm (Optional Extra)
- Can be connected to PC via a one-to-one wireless system - (Optional Extra)



With the subject of Indoor Air Quality becoming more prominent and recognised throughout many different industries, it has become essential to be able to accurately monitor low levels of indoor pollutant gases.

The *hTV-m* can precisely measure formaldehyde concentrations in parts per million (ppm) and mg/m<sup>3</sup> over a wide range of temperature and humidity. Fast and easy to use, pressing a single button gives an immediate indication of concentration levels.

The improved Formaldemeter *hTV-m* is reliable and simple to calibrate. The compact size means the *hTV-m* is small enough to be used as a hand held device.

The built in memory and real time clock enables the *hTV-m* to log all 3 parameters and corresponding times, allowing improved monitoring and analysis opportunities. Alternatively a PC can automate the sampling and log data at specific times by a direct or wireless connection. This is advantageous as it allows the user more freedom and is a cost effective approach to taking such measurements.

# Formaldemeter™ *hTV-m*



[www.ppm-technology.com](http://www.ppm-technology.com) [info@ppm-technology.com](mailto:info@ppm-technology.com)  
Cibyn Industrial Estate, Caernarfon, Gwynedd,  
Wales, LL55 2BD, UK

Tel +44 (0) 1286 676 999 Fax +44 (0) 1286 671 811



# Technical Specifications

## Instrument

**Sampling method:** 10ml snatch sample of air taken by internal pump  
**Sampling frequency:** 1 minute in normal IAQ conditions  
**Response Time:** 60 seconds in high accuracy mode, approx. 8 seconds in low accuracy  
**Mechanical:** 150 x 80 x 34mm ABS plastic case.  
 Padded accessory case 266 x 230 x 50mm  
**Weight:** 270g with 9v PP3 battery. Total kit weighs 750g  
**Power:** PP3 9v alkaline battery or 9-15v DC supply

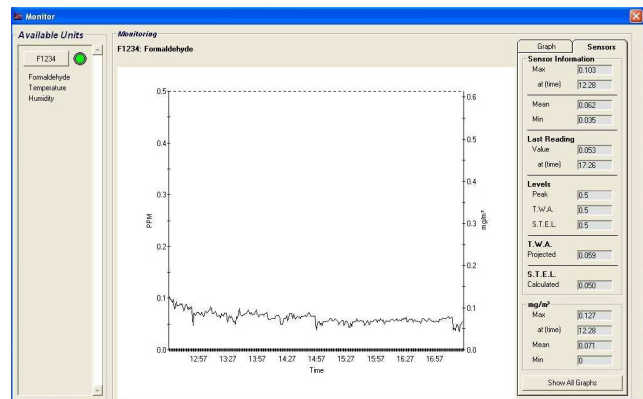
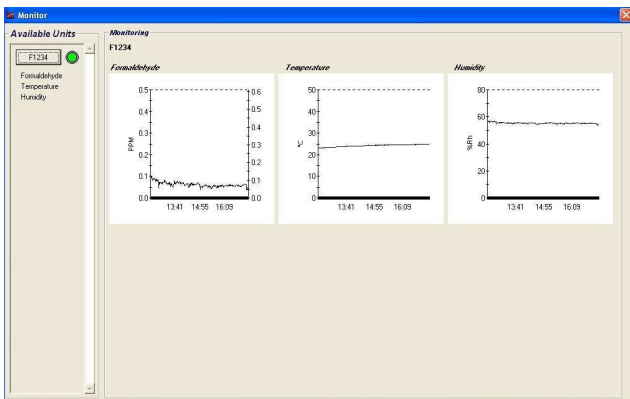
## Sensors

### Formaldehyde

**Type:** Electrochemical cell manufactured by PPM Technology  
**Range:** 0-10ppm as standard (0-12.3mg/m<sup>3</sup> @ 25°C).  
**Resolution:** 0.01ppm  
**Precision:** 2%  
**Accuracy:** 94% of all instrument readings meet the NIOSH criteria for an acceptable method when measuring 0.3ppm of formaldehyde over a relative humidity range of 25-70%. The NIOSH criterion for acceptability is that all results fall within 25% of the true value at the 95% confidence level.  
**Calibration:** By user with supplied calibration standard or by original manufacturer.

### Temperature & Humidity Sensor

**Type:** Interchangeable digital CMOSens®  
**Range:** -40 to +128°C, 0 to 100% RH  
**Accuracy:** +/- 0.4°C, +/-3% RH. Optional upgrade to +/- 0.3°C, +/-1.8% RH  
**Calibration:** Calibrated to ISO/IEC17025 by manufacturer. Traceable by the "National Institute of Standards and Technology" and the "National Physics Laboratory".



## Kit Contents

- 1 x Formaldemeter *htV-m* with Stand
- 1 x Formaldehyde Calibration Standard
- 1 x RS232 Download Cable & USB adaptor
- 1 x Download Software CD
- 1 x Pack of Phenol Filters
- 1 x Operation Manual
- 1 x Mains Adapter with Interchangeable AC Mains Plugs

## Accessories

- Wall Mounting Cradle

## The Wireless One-to-One Module System

A wireless module system to be compatible with the htV-m. A wireless node can be added via the 10-way connector at the back of the instrument allowing the htV-m to receive and transmit digital signals. The htV-m will be able to communicate wireless to a PC thus replacing the RS232 cable. This means that the htV-m can carry out sampling and data logging in unsafe and remote locations with results sent to a safe working environment.



[www.ppm-technology.com](http://www.ppm-technology.com)    [info@ppm-technology.com](mailto:info@ppm-technology.com)  
 Cibyn Industrial Estate, Caernarfon, Gwynedd,  
 Wales, LL55 2BD, UK

Tel +44 (0) 1286 676 999 Fax +44 (0) 1286 671 811



TM  
**Formaldemeter** *htV-m*